

Project Experience

Limestone Township Cemetery

Performed a ground truthing survey for burial plots, performed a GPR survey, and developed a GIS of available data and records.

Mathias Township Cemetery

Converted historic paper burial plots to digital format, performed a GPR survey, recorded GPS points, data, and took photos of all gravestones.

Our Team

Our team has extensive experience working on data management projects in the private and public sectors. Confidentiality, cost-efficiency, and clear communication are their top priorities during each and every project.

www.trimediaee.com

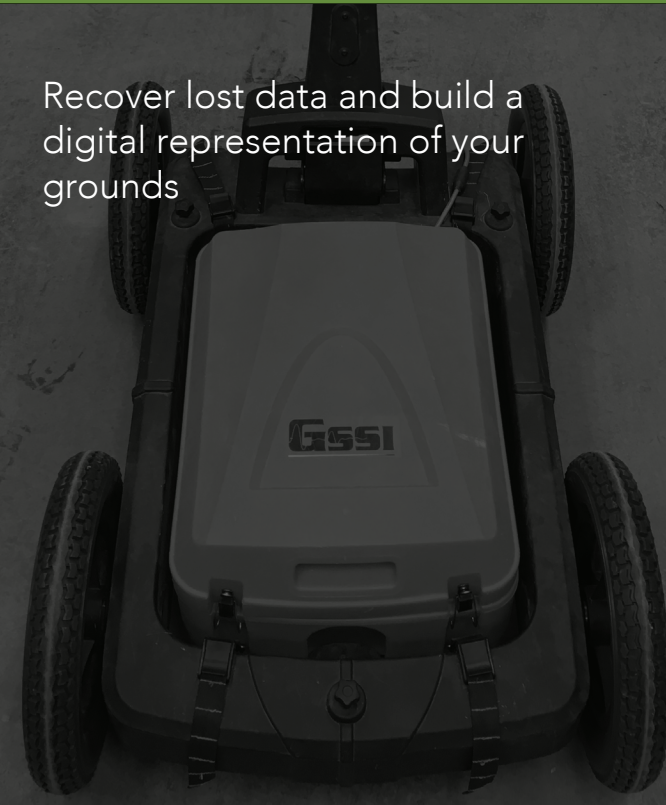
866-866-5125



Offices in Michigan, Wisconsin,
Montana, and Arizona

Cemetery Mapping and Data Management

Recover lost data and build a
digital representation of your
grounds



**Join the grounds managers who
modernized their data.
Contact us today for your free
consultation.**

866-866-5125 | hello@trimediaee.com



THE PROCESS

Accurate recordkeeping in cemeteries is often easier said than done.

It doesn't matter if your grounds are newly acquired or have been in use for hundreds of years.

Records get misplaced – including data about burial sites.

Retrieving missing information might seem like a lost cause, but it can be replaced by using state-of-the-art radar and mapping technology.

Geographic Information Systems (GIS)

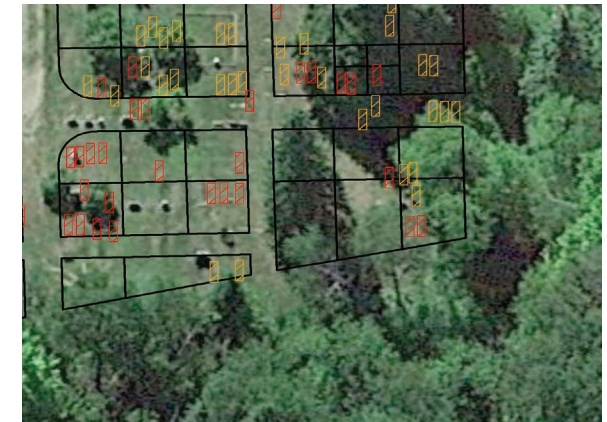
GIS geographically organizes all project data, records, maps, and documents in an easy-to-use interface.

Global Positioning Systems (GPS)

GPS displays and records location-accurate burial site data which can then be overlaid on a digital map of the grounds.

Ground Penetrating Radar (GPR)

GPR is a machine used to scan the ground for hidden, lost, or mis-marked burial locations.



Review

All the records you already have will be thoroughly reviewed and compiled into a single database, including historical maps, deeds, and photos.

Map

Using the latest GIS and GPS technology, our team will create a digital map of your cemetery grounds as it exists today. The information included in your database will be tied to specific plots in your new GIS.

Investigate

If any discrepancies are found while reviewing historical data, we recommend a GPR survey. Using our top-of-the-line Ground Penetrating Radar (GPR) equipment, an above ground investigation will reveal potential unknown burial sites and confirm existing burial sites.

Record

Results from a GPR survey will be implemented into your GIS for a thorough overlay analysis.

Data Management

Our team can manage your GIS data so your cemetery map is always up to date. All it takes is touching base with our team with new information regarding burial sites and utilities. They will take everything from there!

The result of our cemetery mapping process yields three options for your use:

- Free viewing software, we maintain your data
- Purchased software, we train you to maintain your data
- Web/cloud-based map, with option for public access